

Configuration Manual

Please read carefully before starting. Also read the product [safety information](#).

First start

After unpacking, the gateway is ready to use, but requires configuration to adapt to the required functions.

Power supply

First, connect the power supply according to the power supply information.

Opening inbuilt website

Through the WAN interface

To access the built-in website, connect the gateway by WAN to the local network and enter the DHCP assigned IP address in the address window of the browser. Please note that it may take some time from powering on to booting up the system. When the LEDs next to the RJ45 socket start flashing, after about 10 seconds the built-in website becomes available.

user name: **root**

password: **root**

Through the LAN interface

Connect the ETH2 directly to the computer and enter in the address window of the browser default IP of Gateway.

IP: **192.168.1.1**

user name: **root**

password: **root**

Through the WiFi interface

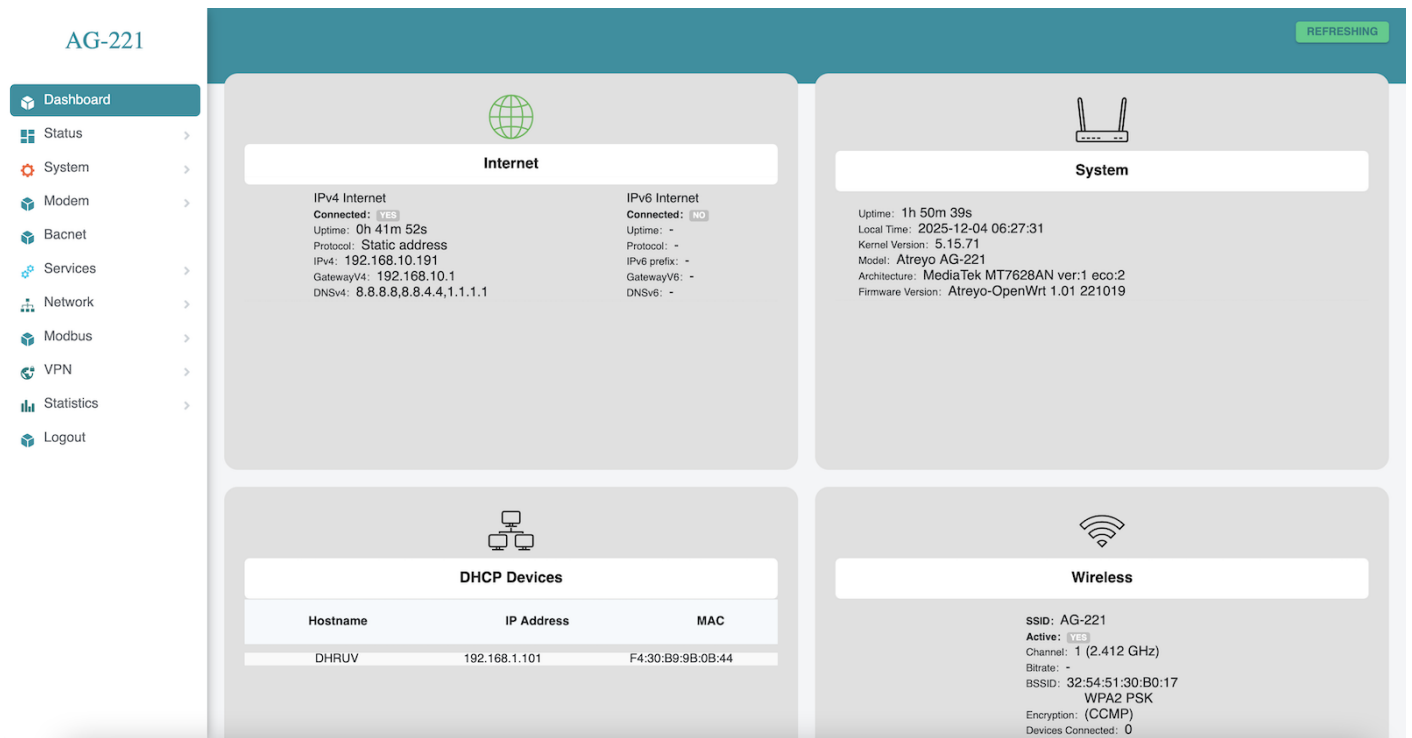
By default, the gateway creates its own network with default ESSID "AG-702". The network is secured with default password "atreyo12".

Connect to this network and enter the IP in the address bar of your browser.

IP: **192.168.1.1**
user name: **root**
password: **root**

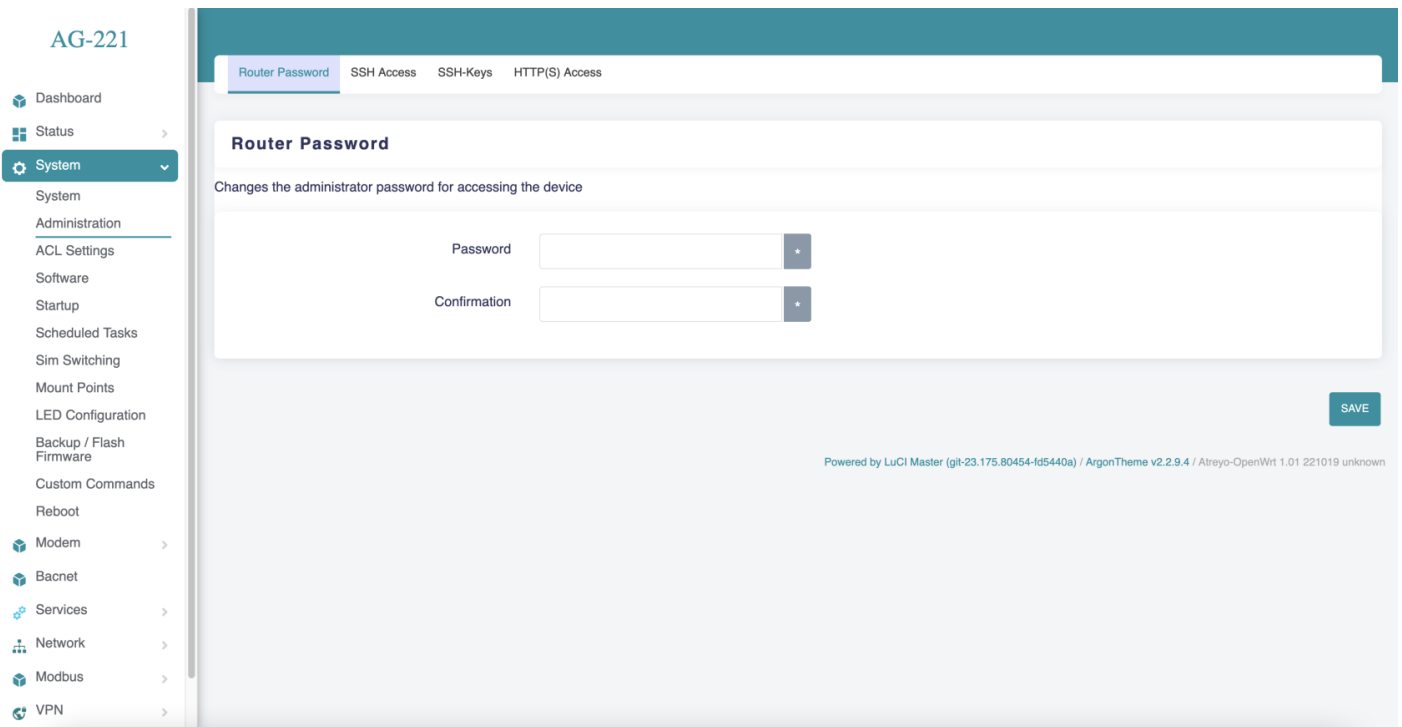


After logging in, you are automatically taken to the dashboard page.



Password setting

Set a password on the **System > administration** page:



To maintain security, it is recommended to use long and complex passwords.

Cellular modem

Modem

The Gateway in its basic configuration is equipped with an LTE modem that also supports GPRS and SMS functions. Different modems were used depending on the model variant. Here is a table of models.

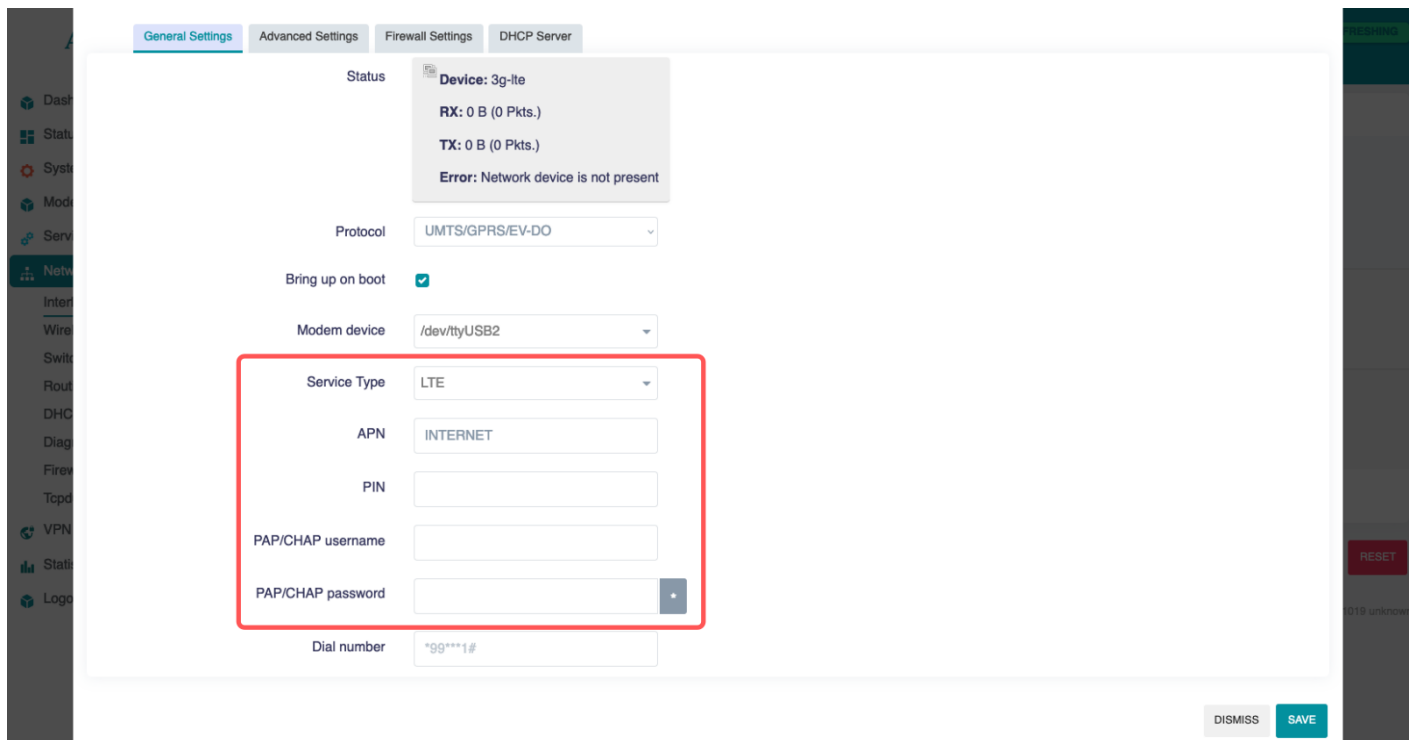
SIM card

The Gateway supports two nano SIM cards, both 1.8V and 3V. The card connector is tray type. When installing the SIM card, pay attention to the correct insertion of the card. The used SIM card tray is designed so that the card sticks to the tray. This make easily insert the SIM regardless of the position of the Gateway

Using Cellular Network

To activate the LTE modem, go to **Network > Interfaces** and select the lte tab there.

Mostly the network operator requires you to enter the APN, sometimes it also requires a username and password. Enter the required data and save.



Then go to **System > Custom Commands** and click on Start modem with SIM1/Start modem with SIM2. Depending on which SIM card you want to start.

- Dashboard
- Status >
- System >
 - System
 - Administration
 - ACL Settings
 - Software
 - Startup
 - Scheduled Tasks
 - Sim Switching
 - Mount Points
- Dashboard
- Status >
- System >
 - System
 - Administration
 - ACL Settings
 - Software
 - Startup
 - Scheduled Tasks
 - Sim Switching
 - Mount Points
 - LED Configuration
 - Backup / Flash Firmware
 - Custom Commands
 - Reboot
- Modem >
- Bacnet
- Services >
- Network >

Dashboard
Configure

Custom Commands

Start modem with SIM1 RUN SCRIPT COMMAND	Start modem with SIM2 RUN SCRIPT COMMAND	Shutdown modem RUN SCRIPT COMMAND
Resetting the modem to factory settin... RUN SCRIPT COMMAND	Switch modem to QMI mode wwan0: RUN SCRIPT COMMAND	Switch modem to RNDIS mode usb0: RUN SCRIPT COMMAND
Switch modem to ECM mode usb0: RUN SCRIPT COMMAND	Switch modem to MBIM mode wwan0: RUN SCRIPT COMMAND	Switch modem to PPP mode RUN SCRIPT COMMAND
Format NAND and create as EXTROOT RUN SCRIPT COMMAND	Delete EXTROOT from NAND RUN SCRIPT COMMAND	Format NAND and mount as /nand in r... RUN SCRIPT COMMAND
Restore NAND as EXTROOT RUN SCRIPT COMMAND	Show mounted block devices RUN SCRIPT COMMAND	Show space on mounted devices RUN SCRIPT COMMAND
Test all LEDs RUN SCRIPT COMMAND	List devices USB RUN SCRIPT COMMAND	Turn GPS antenna to active mode RUN SCRIPT COMMAND
Turn GPS antenna to passive mode RUN SCRIPT COMMAND	Activate GPS on ttyGSM5 RUN SCRIPT COMMAND	Show GPS location RUN SCRIPT COMMAND

The modem will start up and connect to the Internet. To check if it is working properly and what the signal is, go to **Modem > Information about 3G/4G/5G** connection. When the modem starts up, the LEDs showing the signal strength will also light up. This makes it easy to see the signal strength in a particular location.

- Dashboard
- Status >
- System >
- Modem >
 - Information about 3G/4G/5G connection
 - SMS Messages
- Bacnet
- Services >
- Network >
- Modbus >
- VPN >
- Statistics >
- Logout

Details
USB debug information
Configuration
REFRESHING

3ginfo-lite

More information about the 3ginfo on the eko.one.pl forum.

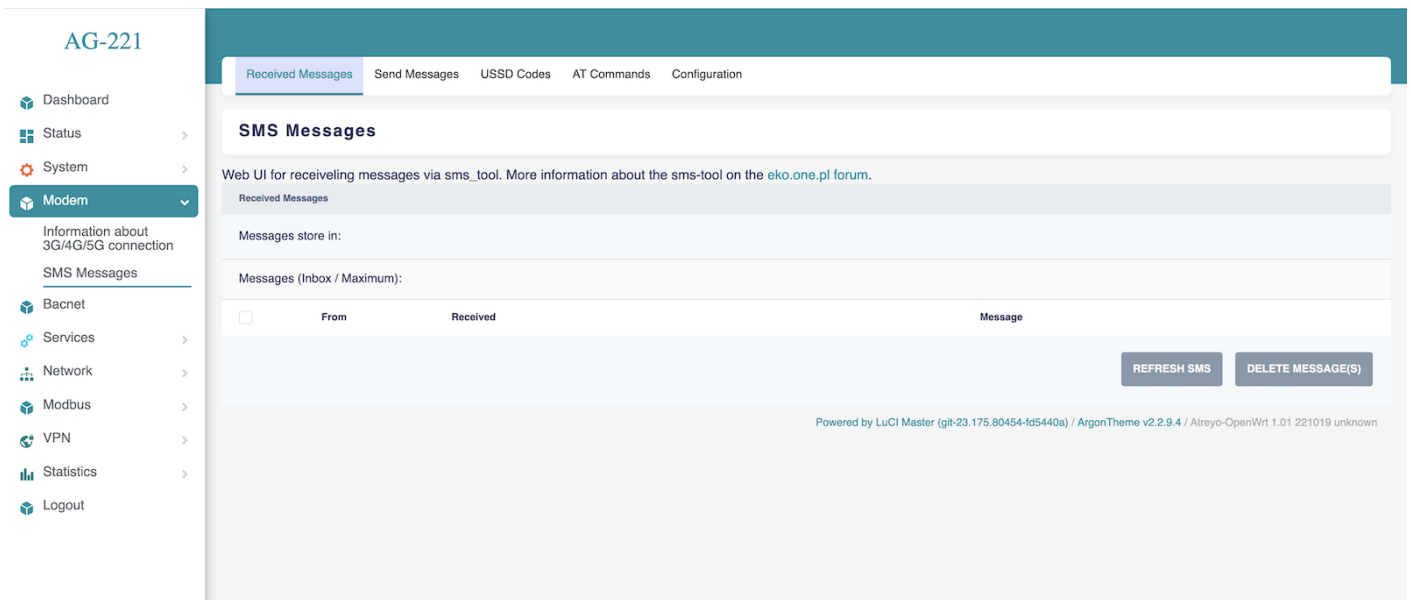
General Information	
Signal strength	64%
Operator	Vi India
SIM status	Registered
Connection statistics	🔄 0d, 00:07:14 ▼ 473.2 KiB ▲ 318.4 KiB
Technology	LTE
Modem Information	
Modem type	-
Revision / Firmware	-
IP address / Communication Port	/dev/ttyUSB5
Protocol	-
Cell / Signal Information	

Cellular modem ON on start

To make the gateway automatically connect to the Internet after startup, you need to add a modem startup in the System > Startup section under Local Startup, add a line before line 'exit 0'. **/usr/commands/start_modem_sim1.sh or /usr/commands/start_modem_sim2.sh**. Then save the changes. After each reboot, the gateway will automatically start the modem with the selected SIM card.

SMS

To test the SMS operation, the gateway has an SMS interface installed. Under **Modem > SMS Messages**. There you can check sent and received SMS. Be sure to enter the phone number together with the country prefix, but without the + sign. The maximum number of characters is 160. The system does not support alphabets such as devanagari. The maximum number of messages in the inbox is 20.



For send SMS go to **Send Message** tab.

- Dashboard
- Status
- System
- Modem**
 - Information about 3G/4G/5G connection
 - SMS Messages
- Bacnet
- Services
- Network
- Modbus
- VPN
- Statistics
- Logout

Received Messages **Send Messages** USSD Codes AT Commands Configuration

SMS Messages

Web UI for sending messages via sms_tool. More information about the sms-tool on the eko.one.pl forum.

Send Messages

User Phonebook: >

Send to: 91

Message text:

Status:

SEND MESSAGE

Powered by LuCI Master (git-23.175.80454-1d5440a) / ArgonTheme v2.2.9.4 / Atreyo-OpenWrt 1.01 221019 unknown

System statistics

The gateway has a built-in real-time statistics system under **Status > Realtime Graphs** and accurate statistics with selectable time range under **Statistics > Graph**. You can check CPU load, memory usage, network load, etc.

Realtime Load

- AG-221
- Dashboard
 - Status**
 - Overview
 - Routing
 - Firewall
 - System Log
 - Processes
 - Channel Analysis
 - Realtime Graphs
 - System
 - Modem
 - Bacnet
 - Services
 - Network
 - Modbus
 - VPN
 - Statistics
 - Logout

REFRESHING

Load Traffic Wireless Connections

1 Minute Load:	0.47	Average:	0.18	Peak:	0.56
5 Minute Load:	0.24	Average:	0.14	Peak:	0.25
15 Minute Load:	0.18	Average:	0.15	Peak:	0.18

Powered by LuCI Master (git-23.175.80454-1d5440a) / ArgonTheme v2.2.9.4 / Atreyo-OpenWrt 1.01 221019 unknown

Statistics Interfaces

- Dashboard
- Status
- System
- Modem
- Bacnet
- Services
- Network
- Modbus
- VPN
- Statistics
- Graphs
- Setup
- Logout



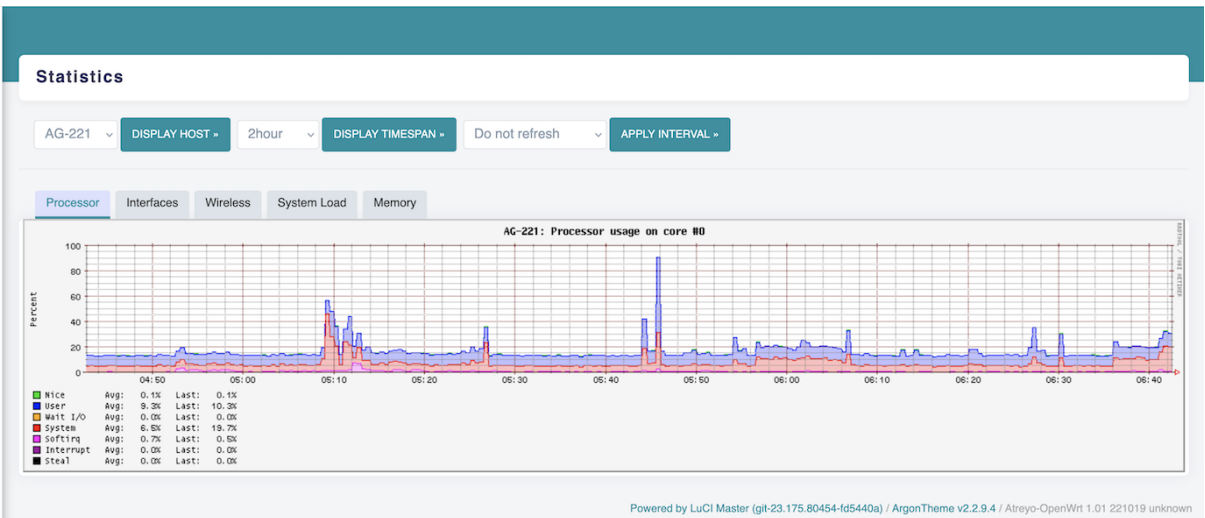
Statistics Memory

- Dashboard
- Status
- System
- Modem
- Bacnet
- Services
- Network
- Modbus
- VPN
- Statistics
- Graphs
- Setup
- Logout

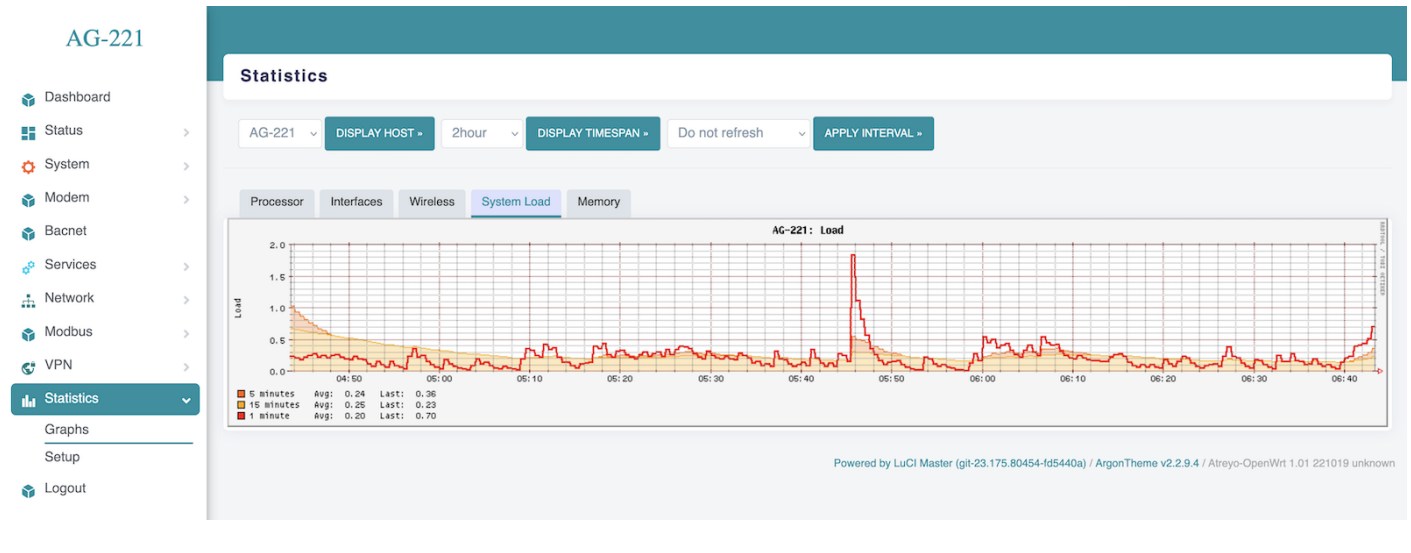


Statistics Processor

- Dashboard
- Status
- System
- Modem
- Bacnet
- Services
- Network
- Modbus
- VPN
- Statistics
- Graphs
- Setup
- Logout



Statistics System Load



Modbus

The Gateway has a very advanced Modbus application with a convenient graphical interface. Below are the capabilities of the application:

- Modbus TCP/IP and Modbus RTU support.
- Any number of serial ports
- Support for external USB/serial interfaces
- JSON, TCP/IP and MQTT string formation
- Data logging in the event of no connection to a server
- Storage of all data in internal memory

A detailed guide to Modbus configuration is available [here](#).

Using the terminal

The AG-221 has a built-in bash terminal. With it you can execute all commands in the OpenWRT system. To enter the terminal, go to the tools > terminal section on the built-in website. The default password is the same **root/root**.

- Dashboard
- Status
- System
- Modem
- Bacnet
- Services**
 - Modbus Device
 - Modbusbridge
 - Internet Detector
 - Apinger
 - Watchcat
 - ser2net
 - Terminal
 - uHTTPD
- Network
- Modbus
- VPN
- Statistics
- Logout

The screenshot shows the Terminal window of the AG-221 device. The terminal output includes a large ASCII art logo at the top, followed by system boot information: "OpenWrt V23.05, Kernel V5.15.71, Atrayo Environment V1.01.10 EC200". Below this, system statistics are displayed: "Machine: Atrayo AG-221", "Uptime: 0d, 02:10:55", "Load: 0.24 0.30 0.23", "Flash: total: 33.4MB, free: 25.7MB, used: 23%", and "Memory: total: 245.3MB, free: 162.3MB, used: 33%". The terminal interface has a "Terminal" tab selected and a "Config" tab. At the bottom right of the terminal window, it says "Powered by LuCI Master (git-23.175.80454-1d5440a) / ArgonTheme v2.2.9.4 / Atrayo-OpenWrt 1.01.221019 unknown".

Reset and default

Make factory default

To reset the system to factory settings, hold down the "Default/Reset" button for more than 5 seconds while the device is operational. During the factory reset, all LED indicators will light up for 2 seconds.

Reset device

To restart the gateway without disconnecting the power supply, press and hold the "Reset/Default" button for less than 5 seconds. During the restart, 4 LED indicators will light up for 1 second.

Do not hold the button for more than 5 seconds, as it will trigger the gateway to restore default settings.