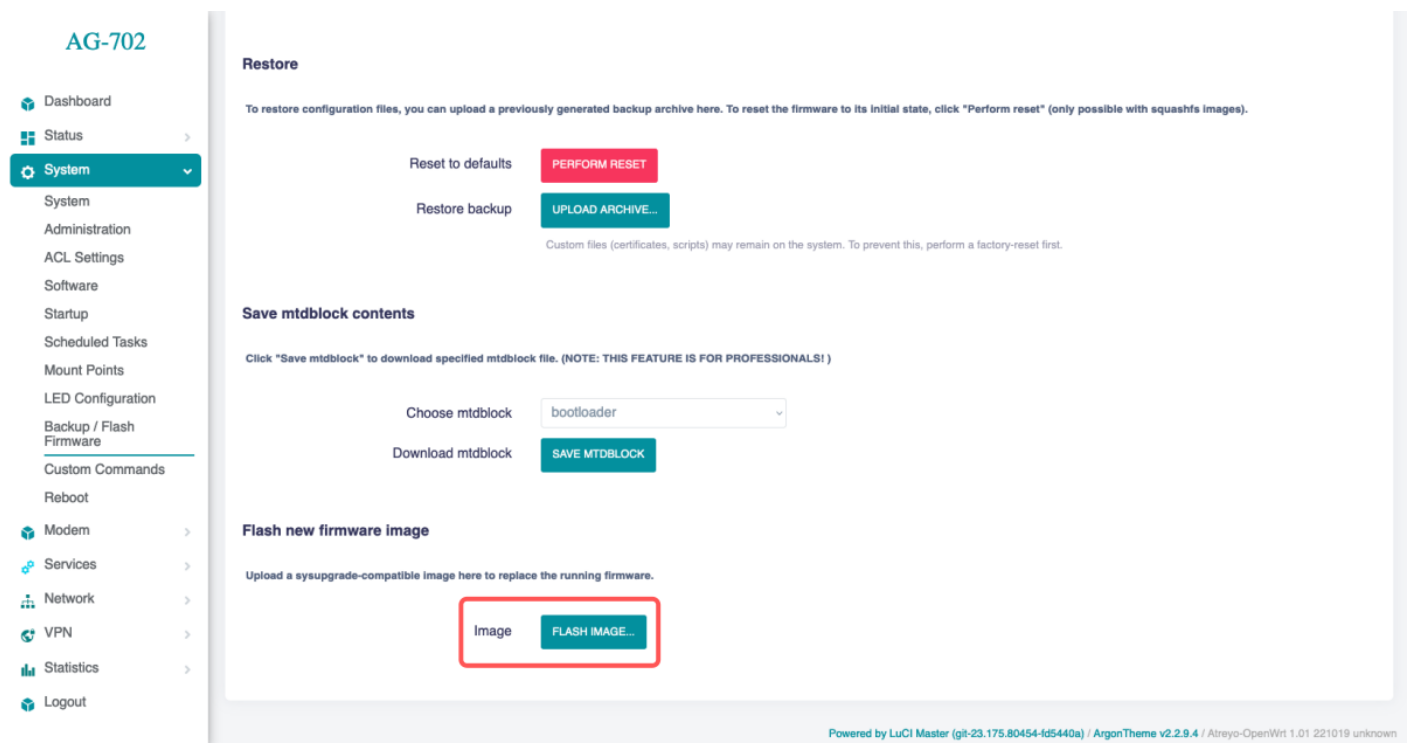


Firmware update

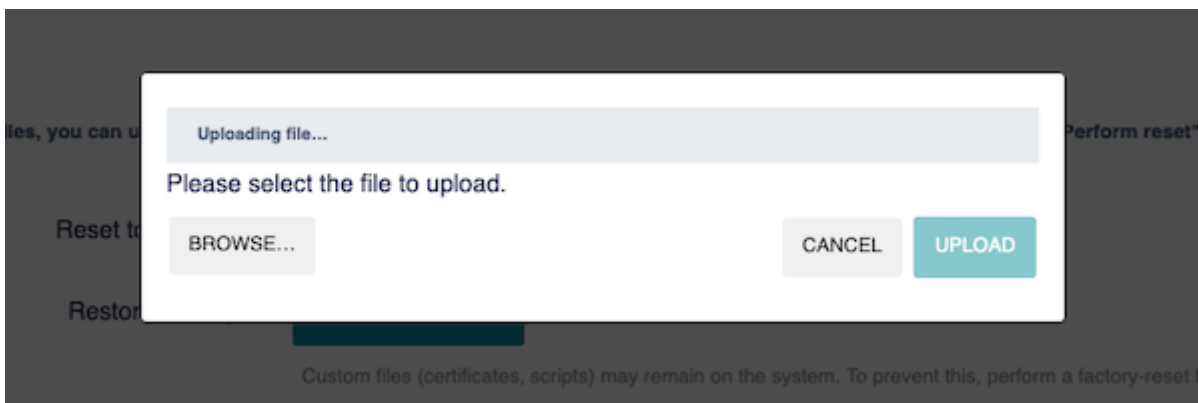
The system can be updated via the built-in website. We can update OpenWRT firmware both when the system is running and when it's in U-Boot mode. In cases we need to have a firmware file with a new system compatible with this gateway model. Uploading the incorrect image may cause the device to malfunction.

When OpenWRT is running

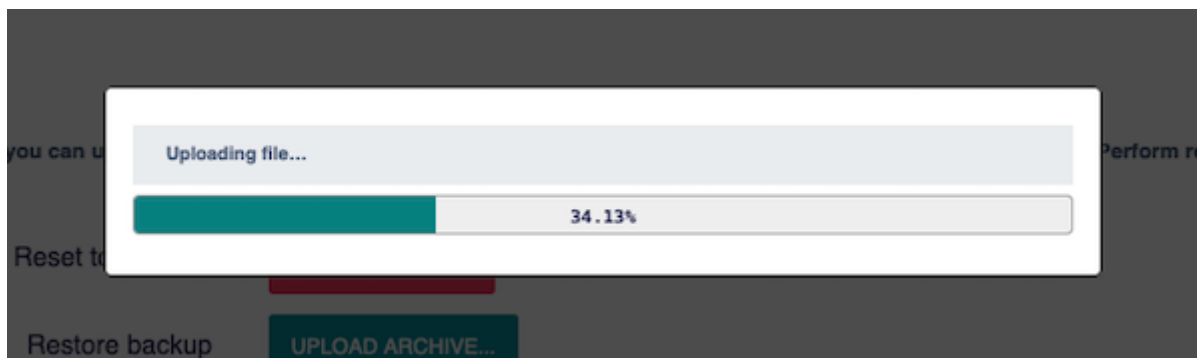
Go to **System > Backup / Flash Firmware**. At the bottom of the page is an option to Flash new firmware image. Select the correct system image and click **Flash Image**.



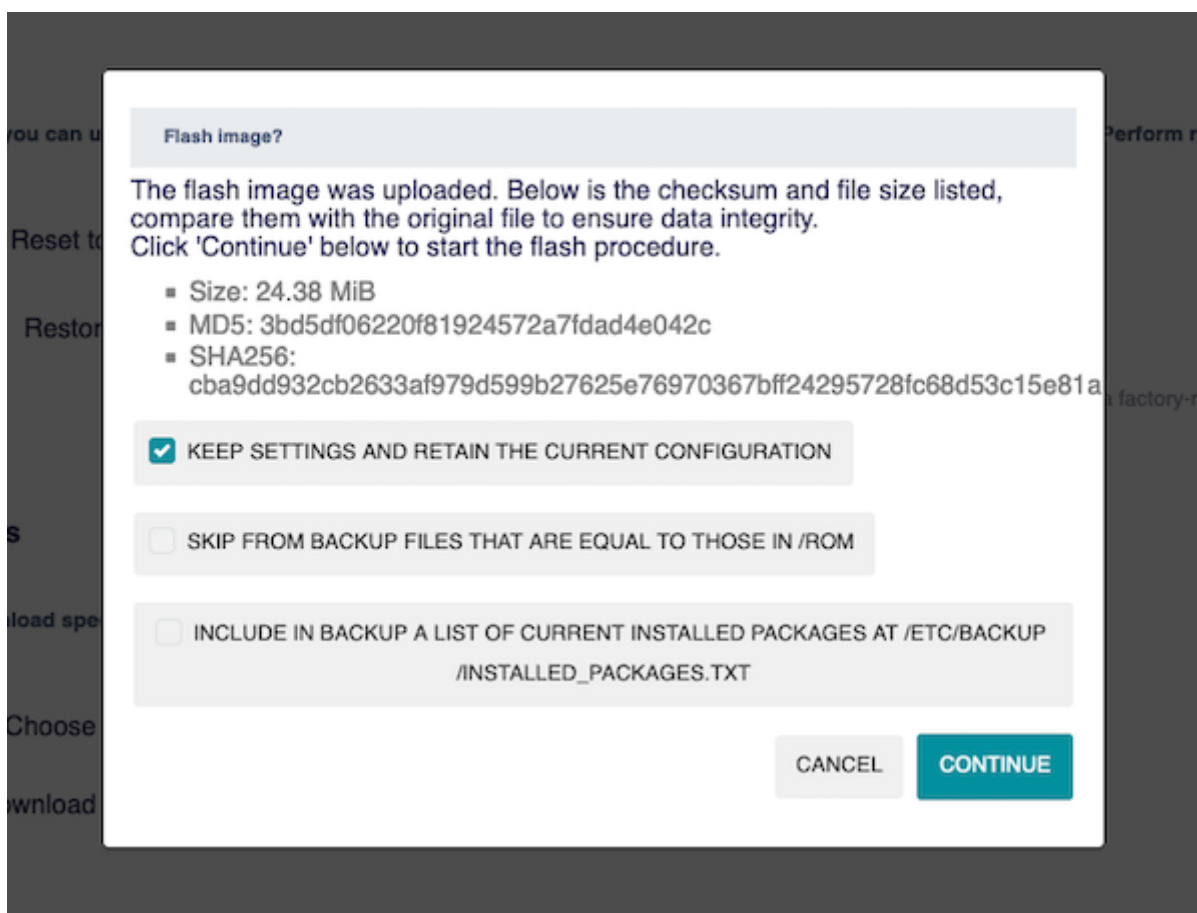
This is followed by a firmware file selection window.



Select the correct file and click **upload**.



The file will be loaded into the gateway and verified. If it is verified correctly it will go to the window where the option "**Keep settings and retain the current configuration**" will be checked. If you do not care about keeping the configuration, it is better to uncheck this option.



Then you have to wait a few minutes for the system to load and update.

Do not turn off the gateway while the system is being updated. This will damage the system.

By U-Boot mode

This method of uploading firmware should only be used when the system is not working and the firmware cannot be uploaded in the normal way. To enter U-Boot mode press RESET switch for 4

seconds when switching on the power supply. The Gateway should start on U-Boot mode. In U-Boot mode, the white STAT LED glows continuously. To access internal website go to IP **192.168.10.50** and load firmware from proper firmware file provided by Atreyo.

Uploading incompatible firmware not provided by Atreyo will void the warranty.



Then you have to wait a few minutes for the system to load and update.

Do not turn off the gateway while the system is being updated. This will damage the system.

Firmware list

The Gateway works on the OpenWRT operating system. The operating system is specially prepared and compiled for hardware. So when it is booted up, it is ready for use. In addition to the pre-installed application, we provide our own repository of free apps compiled for this Gateway. We update the system regularly to keep the latest version. You can check the latest releases here.

V1.01.05

With built-in Modbus Master. IPV6 support added.

AG-702-LT-EU version

Firmware Version	File name	Kernel	OpenWRT	Date
V1.01.05a	File download	5.15.71		08.01.2025

AG-702-LT-GL version

Firmware Version	File download	Kernet	OpenWRT	Date
V1.01.05a		5.15.71		08.01.2025

Revision #3
Created 16 February 2025 08:41:32 by Admin
Updated 13 March 2025 11:17:17 by Admin