

AMB-12I-4O

Expander

The AMB-12I-4O is an input/output interface module to Modbus RTU over RS485. It has 12 isolated digital input with high voltage range up to 30VDC and 4 relay output with 5A 230V range and NO contacts. The power supply range is 8 to 36V and accept DC or AC voltage. The use of DC / DC technology for supplying relays enables a wide range of supply voltages.

The Modbus address and baud rate is configurable by DIP switch. Each input and output has activity indicator and module also has indicator of activity. The use of 32-bit ARM core provides fast processing and quick communication.

Please read carefully before starting. Also read the product [safety information](#).

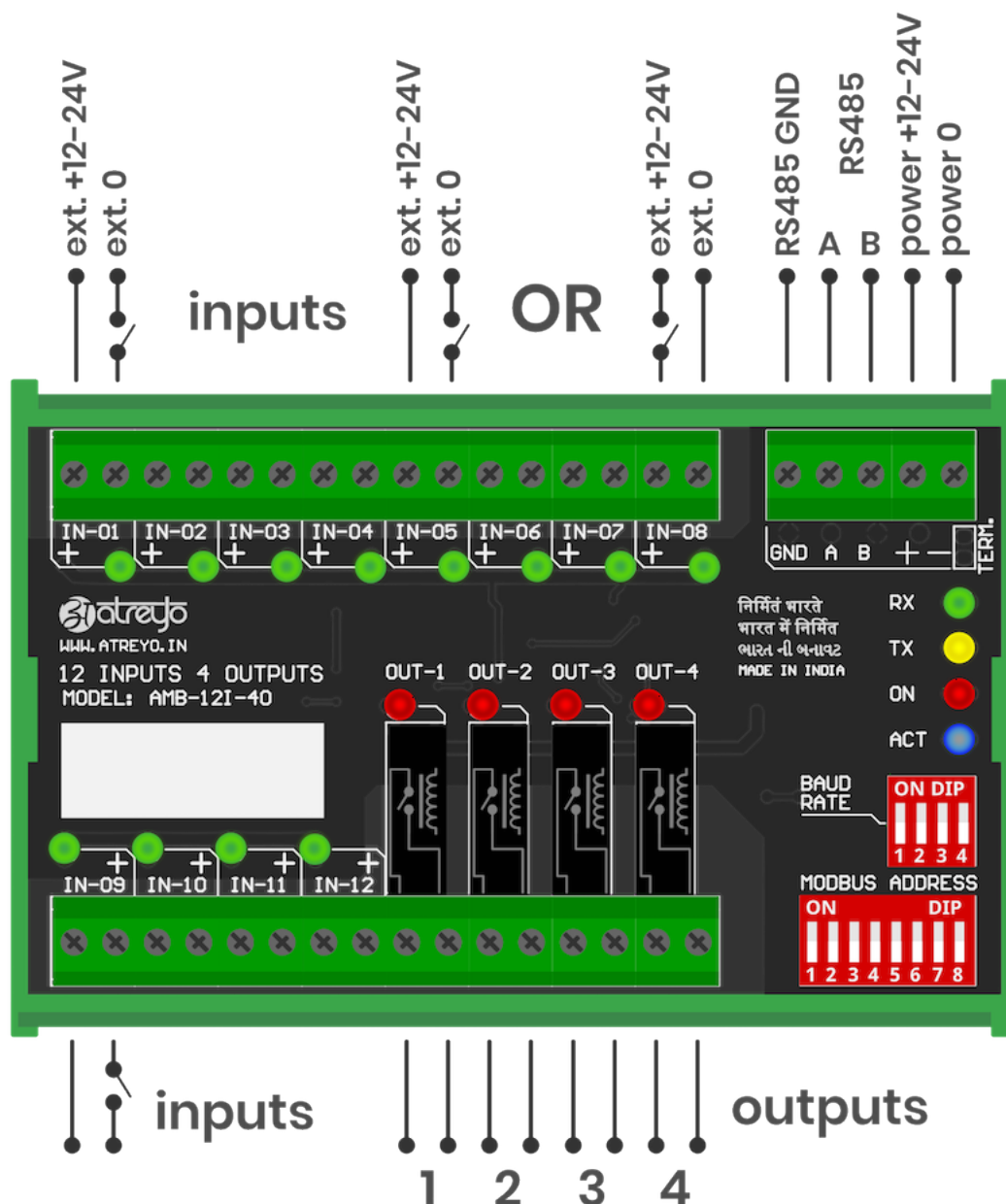
- [Configuration manual](#)
- [Safety information](#)

Configuration manual

Wiring

The expander has opto-isolated inputs that require an external power supply. This requires a 5-30V power supply. The inputs can be driven by both positive and negative signals. Both examples are shown in the attached diagram.

The outputs of the expander are directly connected to the relay leads. The relays are of normal open type.



Protocol Description

Modbus Protocol is a messaging structure, widely used to establish master-slave communication between intelligent devices. A Modbus message sent from a master to a slave contains the address of the slave, the 'command' (e.g. 'read register' or 'write register'), the data, and a check sum (LRC or CRC).

Since Modbus protocol is just a messaging structure, it is independent of the underlying physical layer. In AMB-4I-40 is implemented using RS485 interface.

MODBUS RTU Framing

The AMB-4I-4O module supports standard RTU Modbus protocol for getting the input status and setting/getting the relays status. RTU Modbus Protocol frame is illustrated below:

Start	Address	Function	Data	RC Check	End
≥ 3.5 Char	4 Bits	8 Bits	N*8 Bits	16 Bits	≥ 3.5 Char

- **Start** is at least 3.5 char time of silent interval between master and slave to start communication
- **Address** is a slave ID Address
- **Function** is the function code of Modbus protocol
- **Data** is the appropriate data for function code
- **CRC** is Cyclic Redundancy Check for Error Checking (here, CRC-16,Big Endian(ABCD))
- **End** is at least 3.5 char time of silent interval between master and slave to start communication

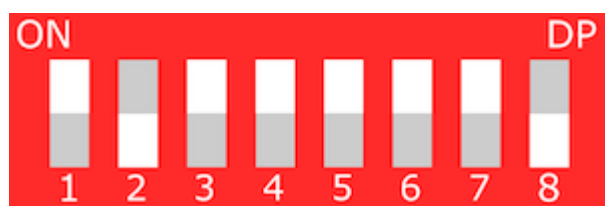
MODBUS Serial Port Parameter

Parameter	Option/range
Baudrate	9600 – 128000 configurable
ata bit	8
Parity	None
Stop bit	1

ID Configuration of MODBUS Card

User can set the slave ID address using 8 Bit DIP switch found on board. This allow 0 to 255 different IDs to be set. The number below the switches are added together and the result will be identifier of the device slave ID.

To set the slave ID 125, you need to turn ON switch 1,3,4,5,6,7 on DIP switch and OFF the others (In this, convert slave ID number 125 into 8bit binary form – 01111101, turn ON DIP switch 1,3,4,5,6,7 and turn OFF DIP switch 2,8) and so on....



Baudrate Configuration of MODBUS

User can set the baudrate using 4 Bit DIP switch found on board. To set baudrate, first turn off power supply of card. This allows to set baudrate between 2400bps to 128000bps as shown below table.

Baudrate	SW1	SW2	SW3	SW4
9600	OFF	OFF	OFF	OFF
2400	ON	OFF	OFF	OFF
4800	OFF	ON	OFF	OFF
14400	OFF	OFF	ON	OFF
19200	OFF	OFF	OFF	ON
28800	ON	ON	OFF	OFF
38400	OFF	ON	ON	OFF
57600	OFF	OFF	ON	ON
115200	ON	OFF	OFF	ON
128000	ON	ON	ON	ON

Modbus RTU Commands

The following commands (functions) were implemented in the Modbus RTU AMB-4I-4O.

- 01 (01 hex) Function code – Read Coils
- 02 (02 hex) Function code – Read Discrete Inputs
- 05 (05 hex) Function code – Write Single Coil
- 15 (0F hex) Function Code – Write Multiple Coils

Coils are mapped to outputs and discrete inputs are mapped to inputs. Coils read/write output status and discrete inputs read Input status. There are 12 inputs for reading-input 0 to input 11 which refer to input 1 to input 12 and coil 0 to coil 3 which refer to output 1 to output 4.

Note: For all below example, consider slave address – 0x01 will change with 8bit DIP switch.

01 (01 hex) Function Code – Read Coils

Read Coils command is requesting the ON/OFF status of coils. Read Coils command will return individual current outputs status. Also Read Coils Command will return sequentially outputs current status.

Example of how to read output status are given below:

REQUEST FRAME -

01 01 0000 0004 3DC9

01 - The Slave Address (01 hex = 01)

01 - The Function Code

0000 - The Data Address of first coil to read (0000hex = coil 0)

0004 - The total number of coils requested (0004hex = 4 coils - outputs))

3DC9 - The CRC for error checking

RESPONSE FRAME -

01 01 01 0A D18F

01 - The Slave Address (01 hex = 01)

01 - The Function Code

01 - The number of data bytes to follow (4 coils / 8 bits per byte = 1 byte)

0A - Coils 0 to 3(Output), 0A hex = 0000 1010 (0 - ON, 1 - OFF)

D18F - The CRC for error checking

02 (02 hex) Function Code - Read Discrete Inputs

Read Discrete Inputs Command is requesting the ON/OFF status of Inputs. Read Discrete Inputs command will return individual current Input status. Also this Command will return sequentially Input current status.

Example of how to read Inputs status are given below:

REQUEST FRAME -

01 02 0000 000C 780F

01 - The Slave Address (01 hex = 01)

02 - The Function Code

0000 - The Data Address of first Input to read (0000hex = Input 0)

000C - The total number of Inputs requested (000Chex = 12 Inputs))

780F - The CRC for error checking

RESPONSE FRAME -

01 02 02 5A09 3FD3

01 - The Slave Address (01 hex = 01)

02 - The Function Code

02 - The number of data bytes to follow (12 coils / 8 bits per byte = 2 byte)

5A - Input 7 to 0(Input), 5A hex = 0000 1010 (0 - ON, 1 - OFF)

09 - Input 11 to 8(Input), 09 hex = 0000 1010 (0 - ON, 1 - OFF)

3FD3 - The CRC for error checking

(05hex) Function Code – Write Single Coil

Write Single Coil (0x05) command will set single output(relay) ON or OFF.

Example of how to set Relay ON is given below:

REQUEST FRAME –

01 05 0003 FF00 7C3A

01 – The Slave Address (01 hex = 01)

05 – The Function Code

0003 – The Data Address of coil to change status (0003hex = coil 3)

FF00 – The Status to write (FF00 – ON relay, 0000 – OFF relay)

7C3A – The CRC for error checking

RESPONSE FRAME –

01 05 0003 FF00 7C3A

01 – The Slave Address (01 hex = 01)

05 – The Function Code

0003 – The Data Address of coil to change status (0003hex = coil 3)

FF00 – The Status written (FF00 – ON relay, 0000 – OFF relay)

7C3A – The CRC for error checking

15 (0Fhex) Function Code – Write Multiple Coil

Write Multiple Coils command will set multiple sequential relays ON or OFF.

Example of how to set Relay1 to Relay4 with single command is given below:

REQUEST FRAME –

01 0F 0000 0004 01 0A BE91

01 – The Slave Address (01 hex = 01)

0F – The Function Code

0000 – The Data Address of first coil(0000hex = coil 0)

0004 – The number of coils to written(04hex = Output 1 to 4)

01 – The number of data bytes to follow

0A – 4 space holders & coils 0 – 3 (0000 1010)(0 – OFF, 1 – ON)

BE91 – The CRC for error checking

RESPONSE FRAME –

01 0F 0000 0004 5408

01 – The Slave Address (01 hex = 01)

0F – The Function Code

- 0000** - The Data Address of first coil(0000hex = coil 0)
 - 0004** - The number of coils to written(04hex = Output 1 to 4)
 - 5408** - The CRC for error checking
-

MODBUS Exception Codes

Exception responses from either the master or a slave can result from data processing errors. One of the following events can occur after a request from the master:

- If the slave receives the request from the master without a communication error and can handle the request correctly, it returns a normal response.
- If the slave does not receive the request from the master due to a communication error, it does not return a response. The master program eventually processes a timeout condition for the request.
- If the slave receives the request from the master but detects a communication error, it does not return a response. The master program eventually processes a timeout condition for the request.
- If the slave receives the request from the master without a communication error, but cannot handle it (for example, the request is to read a register that does not exist), the slave returns an exception response to inform the master of the nature of the error.

Exception Frame:

Sn.	Definition	Description
1	Slave Address	The Slave Address of requested slave
2	Exception Function Code	Requested Function Code + 128 (0x80)
3	Exception Code	See in next table
4	CRC check	The CRC for error checking

Exception Codes:

Exception Code	Name	Description
0X01	Illegal Function Code	The function code received in the request is not an allowable action for the slave. This may be because the function code was not implemented in the unit selected.
0x02	Illegal Data Address	The data address received in the request is not an allowable address for the slave.
0x03	Illegal Data Value	A value contained in the request data field is not an allowable value for the slave. This indicates a fault in the structure of remainder of a complex request, such as that the implied length is incorrect.

Safety information

Operating environment

- The device is designed to be installed in clean, dust-free and insect-free places
- Operating temperature: -25 ~ 65°C (-13 ~ 149°F).
- Humidity range is 10% to 95% (non-condensing). Use the device in a dry environment.
- Away from heat sources and direct sunlight.
- It must not be exposed to acid fumes, salts and other chemicals.
- The device must not be used in places where there is a risk of gas explosion.

Use in inappropriate conditions may damage the device or shorten its life.

Electrical and power supply safety

- The device is powered with a voltage in the range of 8-36V. Voltage up to 24V is considered safe. Be especially careful when supplying them with higher voltages.
- Use only approved accessories
- Use the supplied power adapter or a good quality certified power adapter with the correct supply voltage range and sufficient power.
- Only use approved accessories like antenna etc.

Only a person with qualification and appropriate knowledge should install the device.

Malfunctioning and damaged device

- Do not disassemble the device.
- Only qualified personnel must service or repair the device or its accessories.
- If water or other liquid has got into the device, or if it looks mechanically damaged, do not connect the device, but take it to an authorized service center.

What to do and what not to do

- You are solely responsible for the use of the device and any consequences of its use.
- Do not store or use the device in harsh environments such as dust, gases, oils, chemical vapors and damp places.
- Do not throw the device and its accessories. Handle with care.
- The device heats up during operation. Ensure proper ventilation.

- If you need to dispose of your device, check your local regulations for recycling and disposal of electronics.
- Route power, Ethernet, and antenna cables properly so that they cannot be accidentally pulled out.
- The device should be used and kept away from small children.